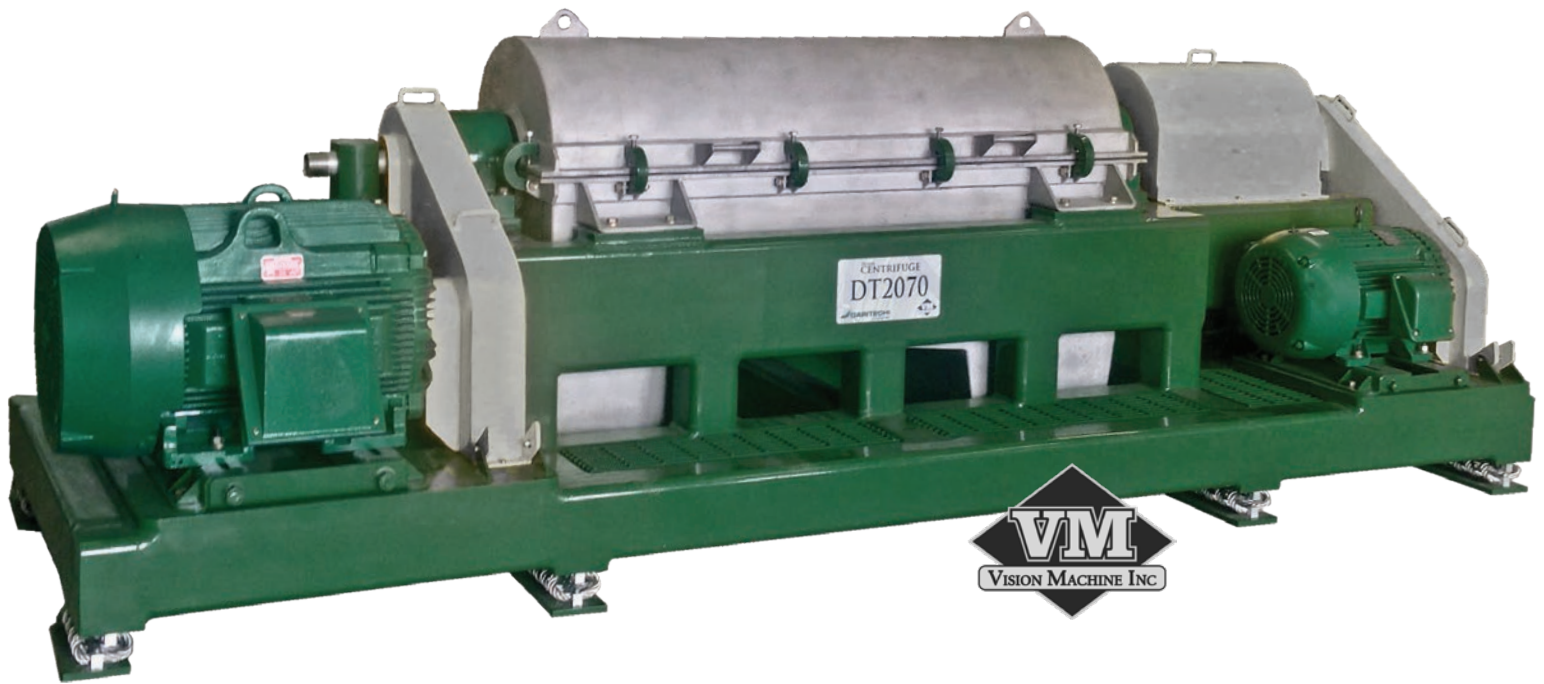


DECANTER CENTRIFUGE



Daritech, Inc., as a leading provider of innovative dairy manure handling systems throughout North America, has joined up with Vision Machine, Inc., to bring you the most cost efficient, durable decanter centrifuge on the market!

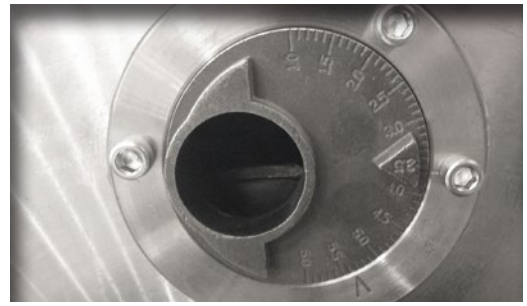
Our decanter centrifuge may be the answer for your dairy!

- High capture of solids going to the lagoon
- Increased flush quality
- Reduced water usage on dairy
- Nutrient removal



Features

- Full length tungsten carbide tile scroll protection
- Parts available same day or next day delivery
- High performance machine design
- Original manufacturer of spare parts
- Heavy duty plow & wipers
- Corrosion-resistant
- Low horsepower
- Field serviceable
- High torque
- Small footprint
- Solid 3/16" plate SS guards
- Easy to operate & maintain



Water Dam

Adjustable water dams allow you to tune the centrifuge to suit your dairy.



Wear Parts

Solid tungsten carbide wear parts are all field replaceable.



- Carbide sleeves are used in the conveyors which are tiled throughout the entire length and have replaceable wear protection as well.
- Case is held in place with manufactured "c" clamps so there are no bolts to remove, therefore, you don't have dropped pieces lodged in augers or pumps.

Technical Parameters of Daritech's Decanter Centrifuge

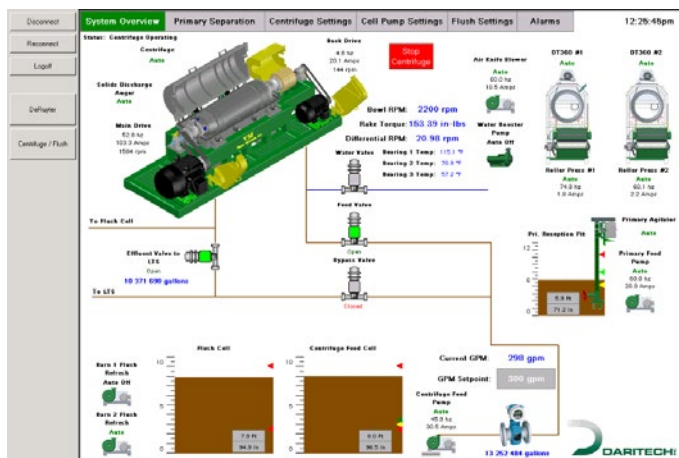
Model	G Force	Standard Main Motor HP	Back Drive	Herd Size
DT1035	3000	20 hp	5 hp	600
DT1448	3000	40 hp	15 hp	1600
DT1655	3000	75 hp	25 hp	3000
DT2070	3000	125 hp	40 hp	5000
DT2484	3000	150 hp	50 hp	6000



PLC Control Box

Our industrial PLC touch screen interface provides high end control for the centrifuge. We are able to provide rich features such as mobile device monitoring, control, text messaging, and remote technical support.

Our control package includes variable frequency drives for all motors, providing a very precise control system that monitors torque



and adjusts the speed of the machine to maximize throughput. We include a braking resistor which allows the machine to come to a full stop in 30 seconds or less.

Our control package is robust providing cutting edge technology, and the reliability of an industrial PLC. We build each panel in our own ETL Listed Panel Shop.

Why Vision Machine?

Vision Machine was first developed as a rebuild facility of centrifuges for the oil fields by owner, Ray Morris. With his experience, Ray has developed a more robust and field serviceable centrifuge. Vision Machine brings to the customer a higher level of service and a reduced cost of ownership. With its longer wearing machines and commitment to the customer, Vision Machine meets the goals of demanding applications.



Founder, Ray Morris, Jr. at Vision Machine Inc in Spring, Texas

Why Daritech?

Daritech complements the Vision Machine equipment with their in-house electrical controls. These controls optimize the efficiency of the centrifuge and give the customer all the automation features they



desire. Daritech understands the needs of the farm, and integrates other equipment with remote conductivity to optimize dairy operations. Coupled with Daritech's depth of knowledge about separation and equipment, the addition of the centrifuge is a great fit.

Lynden, Washington - Milking & Manure Management Sales, Service and Manufacturing

